

# Type **TW52**

## **WEH<sup>®</sup> Connector for filling of gas cylinders**

with external thread (with or without a residual pressure valve) with CO<sub>2</sub> or refrigerants



General

**DESCRIPTION**



**Features**

- Suitable for filling of CO<sub>2</sub> or refrigerants
- Version for **residual pressure valves or non-residual pressure valves** available
- Connection in seconds
- No hand tightening required
- High safety due to pressure-assisted piston
- Environmentally friendly - a vent pipe recirculates the vented gas (in conjunction with TVCO<sub>2</sub>)
- WEH® Jaw locking mechanism
- High-grade materials

The type TW52 quick connector has been developed especially for filling gas cylinders with gaseous and liquid CO<sub>2</sub> or refrigerants. Connection to the cylinder is made within seconds without tedious screwing and unscrewing, thus preventing RSI resulting in the inflammation of tendons and abrasion of joints.

The connector is also suitable for filling one litre cylinders, e.g. for soda drinks.

Type TW52 is optionally available with the TVCO<sub>2</sub> linear valve.

This quick connector is available for gas cylinder valves acc. to DIN, BS, NF, CGA etc.

**Application**

Quick connector for filling of gas cylinders with external thread (with or without a residual pressure valve) with CO<sub>2</sub> or refrigerants.

**TECHNICAL DATA**

Characteristic	Basic version
Nominal bore DN	5 mm
Operating pressure PS	Max. 250 bar Max. 150 bar (TW52 with TVCO <sub>2</sub> linear valve)
Temperature range	-40 °C up to +40 °C (CO <sub>2</sub> )
Connection A	External thread connection acc. to the corresponding national standard e.g. DIN, CGA, BS, NF etc.
Medium	CO <sub>2</sub> , refrigerants
Actuation	Manual actuation via grip sleeve
Material	Corrosion resistant stainless steel, brass
Sealing material	EPDM
Design	With or without RPV pin

Other designs on request

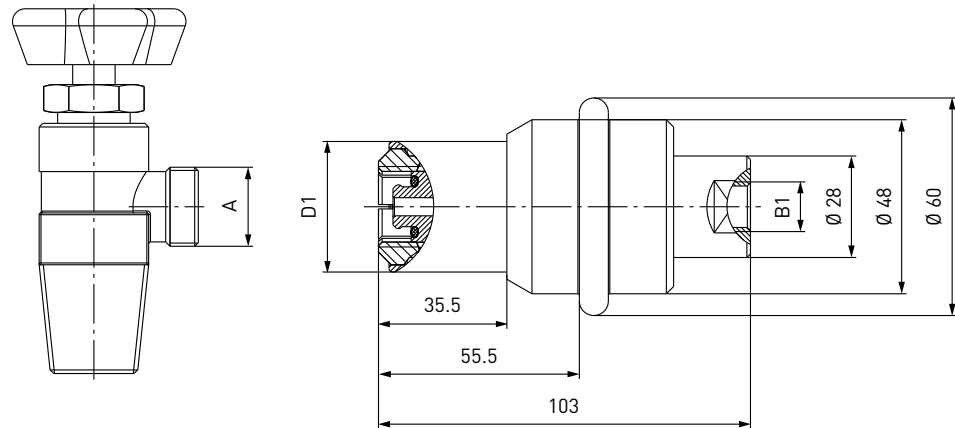
**Example of use:**



Ordering

**ORDERING** | Quick connector TW52 for non-residual pressure valves

approx. dimensions (mm)

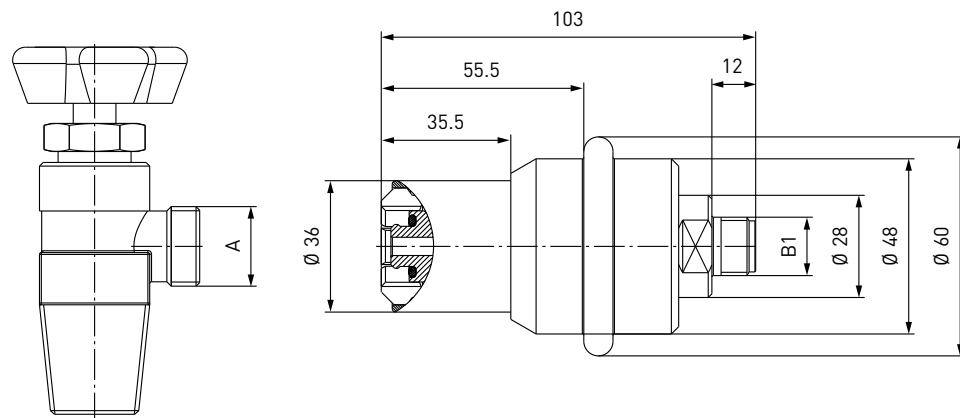


Part No.	Description	Connection A (external thread)	Inlet B1 (internal thread)	D1
<b>C1-16560-X01</b>	TW52	G1/2"	G1/4"	38
<b>C1-16564-X01</b>	TW52	W21.8x1/14"*	G1/4"	36

\* acc. to DIN 477

**ORDERING** | Quick connector TW52 for non-residual pressure valves (suitable for TVCO<sub>2</sub> linear valve)

approx. dimensions (mm)



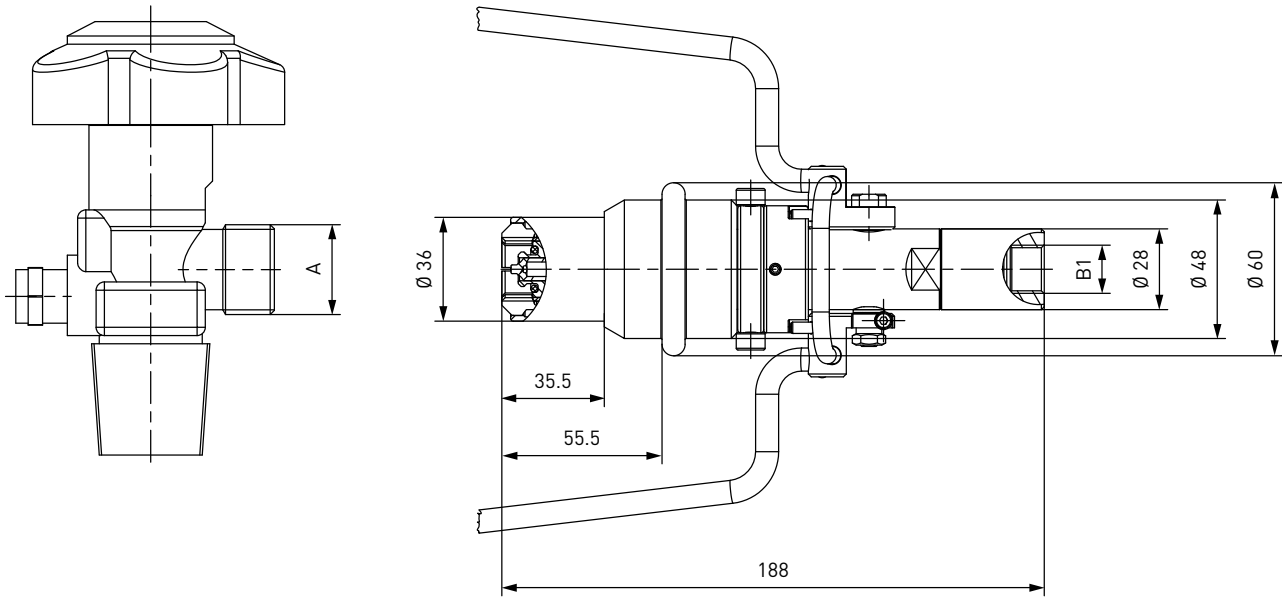
Part No.	Description	Connection A (external thread)	Inlet B1 (external thread)
<b>C1-16563</b>	TW52	W21.8x1/14"*	M16x1.5

\* acc. to DIN 477

Ordering

**ORDERING** | Quick connector TW52 for residual pressure valves (incl. linear valve)

approx. dimensions (mm)



Part No.	Description	Connection A (external thread)	Inlet B1 (internal thread)
<b>C1-68486</b>	TW52	W21.8x1/14"*	G3/8"

\* acc. to DIN 477

Other connector sizes and versions on request.

Required information for ordering see page 7, catalogue no. 20.

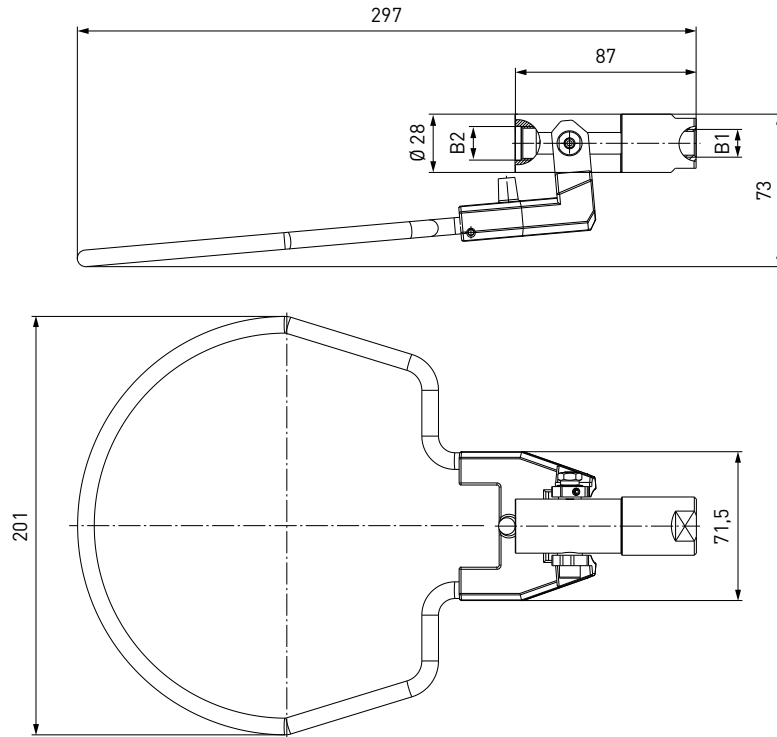
Accessories

**ACCESSORIES**

The following accessories are available for type TW52:

**Linear valve TVCO<sub>2</sub>**

The type TW52 offers a complete solution for TVCO<sub>2</sub> filling in conjunction with our optional TVCO<sub>2</sub> linear valve. Simply connect the filling hose to our TVCO<sub>2</sub> linear valve and pressurize the system. Filling can then proceed. When disconnecting after filling the TW52 vents automatically. The vented gas can be recirculated via a vent pipe and vented remotely, with minimum environmental impact.



Part No.	Description	Connection B1 (internal thread)	Connection B2 (internal thread)
<b>C1-34605</b>	TVCO <sub>2</sub>	G1/4"	M16x1.5

Other connector sizes and versions on request.

Required information for ordering see page 7, catalogue no. 20.

Other products

**OTHER PRODUCTS**

You will find more products in our current catalogue no. 20



Further information on our homepage  
[www.weh.com](http://www.weh.com)

**Abbreviations/Definition**

Explanation of abbreviations see technical appendix in the catalogue or [www.weh.com](http://www.weh.com)

**Safe product selection**

Our WEH® Products are designed to be operated by qualified professional users (insofar as WEH® Products are also designed to be operated by other users in individual cases, this is explicitly stated in the corresponding operating instructions). You alone are responsible for the selection of WEH® Products and their configuration according to the requirements of your system. In doing so, please particularly consider your intended use, your performance data, your material compatibility, your system concept and your system limits as well as your technical and legal requirements for operation, handling and maintenance. The quality and safety of WEH® Products is our highest priority. For this reason, WEH® Products may not be used outside the specifications in the relevant data sheets and product descriptions. We also strongly recommend that you refrain from using third-party spare parts or a combination of WEH® Products with unsuitable third-party products. You alone are responsible for reviewing the suitability of third-party products. WEH® Products and WEH® Spare parts comply with our quality and safety standards.

**Explanation on the Pressure Equipment Directive**

These WEH® Products are generally and exclusively classified as pressure accessories for piping in accordance with Article 2 (5) of the Pressure Equipment Directive 2014/68/EU. These WEH® Products may not be used (i) as safety accessories or (ii) for vessels as defined by the Pressure Equipment Directive 2014/68/EU. Therefore, the application of these WEH® Products must comply with their classification as pressure accessories for piping. The assessment with regard to a different classification can, however, be made on request.

**External change management**

WEH reserves the right to update, optimise and adjust its products continuously. This may result in corresponding changes of the product. Customers will be informed proactively or unsolicited by WEH only in individual cases about product updates, product optimisations and/or product adaptations that have been carried out. You are free to contact WEH at any time to request information about any product updates, product optimisations and/or product adjustments.

© All rights reserved, WEH GmbH. Any unauthorized use is strictly forbidden. Subject to alteration.  
 No liability will be assumed for any content. Herewith previous versions are no longer valid.

**» Contact**

For queries and further information, please do not hesitate to contact us.

Manufacturer:

**WEH GmbH Precision Connectors**

Josef-Henle-Str. 1  
 89257 Illertissen / Germany

Phone: +49 7303 9609-0

Email: [sales@weh.com](mailto:sales@weh.com)

[www.weh.com](http://www.weh.com)